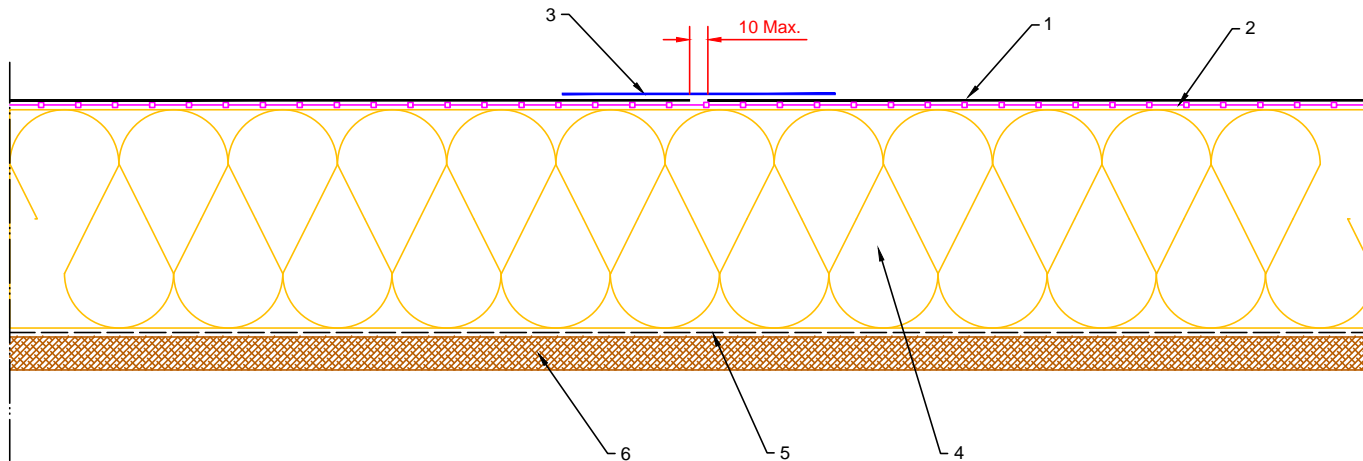
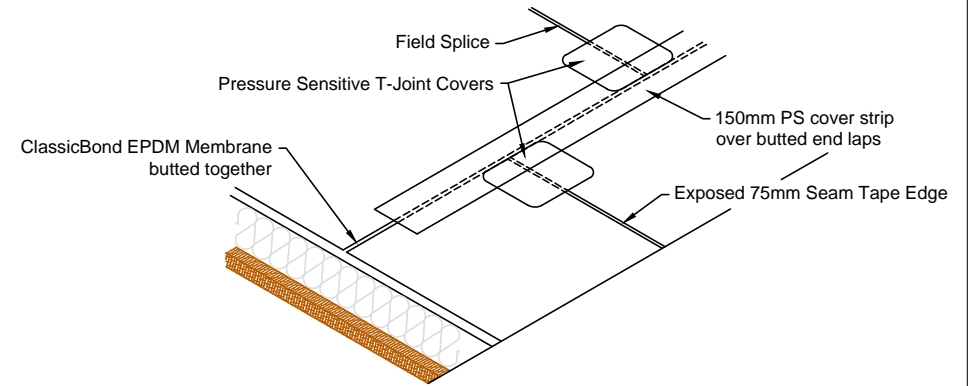


1. ClassicBond EPDM Membrane
2. ClassicBond Decking Adhesive (See Notes)
3. ClassicBond 150mm PS Cover Strip
4. Suitable thermal insulation, thickness determined by U-value
5. Vapour Control Layer (VCL)
6. Structural decking



Notes:

1. This detail was prepared to serve as a guideline representing typical detailing conditions and illustrate the correct application of ClassicBond products only. It may be necessary to modify this detail in whole or part in accordance with specific project conditions, design or requirements.
2. Acrylic Decking Adhesive is for timber substrates only, all other suitable surfaces use ClassicBond Bonding Adhesive.
3. Prior to installation of 150mm Cover Strip apply ClassicBond EPDM Primer to splice area.
4. At field splice intersections apply a section of 225mm Uncured Elastoform Flashing as cover patches.



Title		END LAP SPLICE / PS COVER STRIP	
Product		CB-S-2	

Rev	Date	Comments
A	03.02.14	PRODUCTION Issue

Drawn	Checked	Approved	Scale	Date
MFO	DW	DW	1: 4@A4	03.02.14
Status				
PRODUCTION				
Drawing No:				Rev:
CB/S/2				A