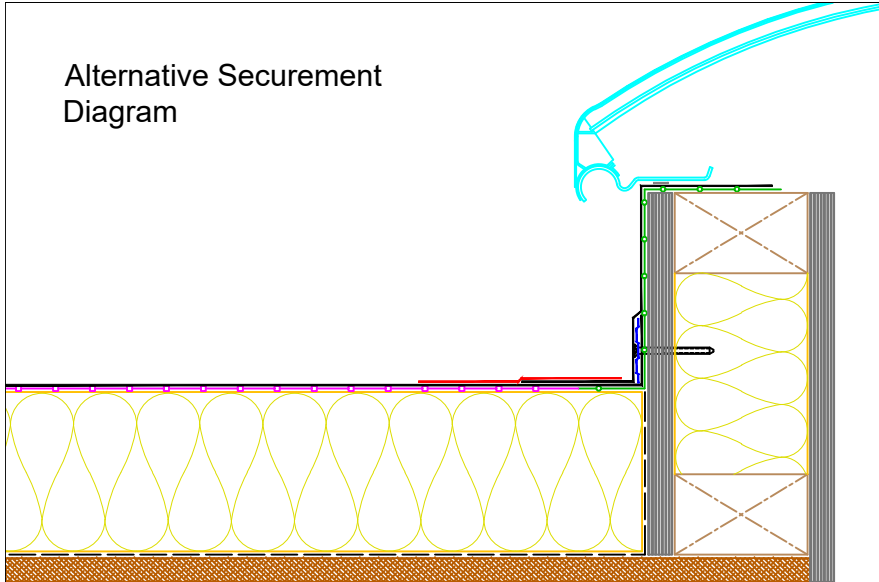


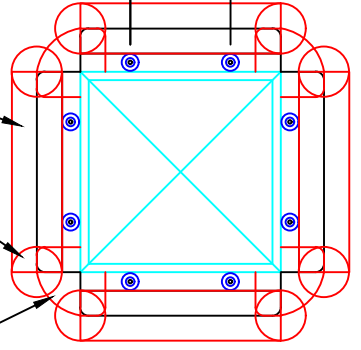
Alternative Securement Diagram



Max 152 Max 300

150mm PS Cover Strip, maintaining minimum 75mm coverage to field membrane and upstand flashing

150mm diameter cover patch formed using 225mm PS uncured Flashing ("Detailing") tape.



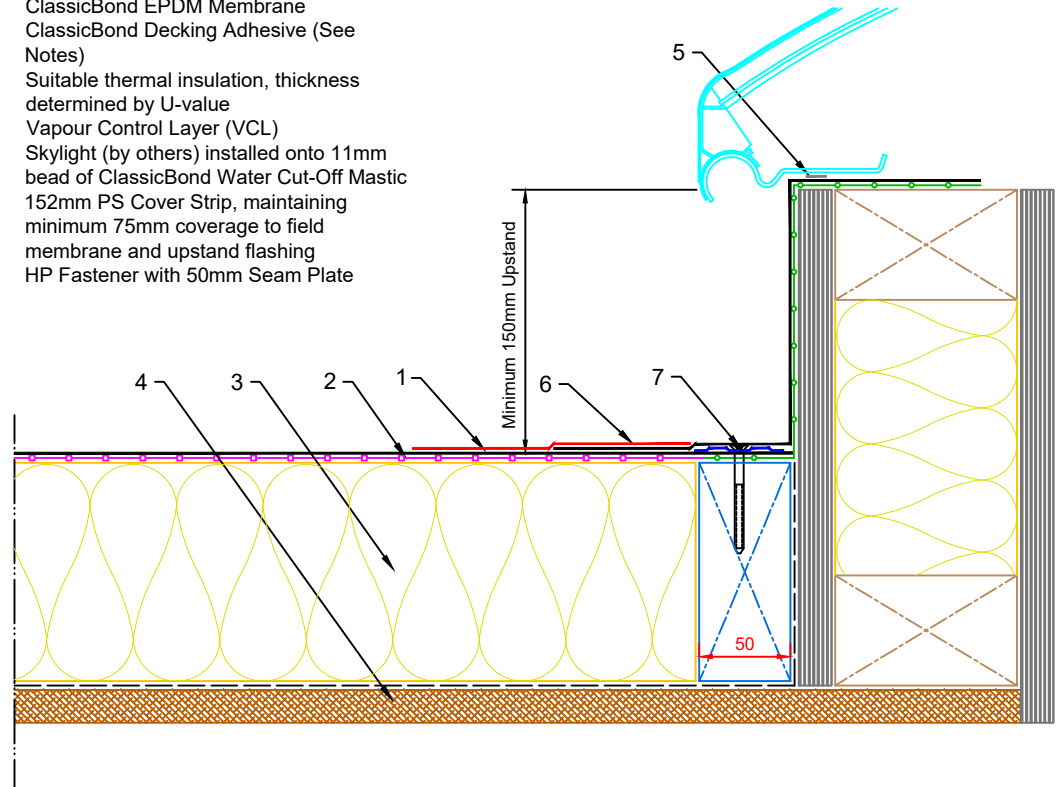
External Corner formed using ClassicBond 225mm PS Uncured Flashing Tape, conforming to standard design principals. See Classic Bond Installation Guide for further details

Notes:

1. This detail was prepared to serve as a guideline representing typical detailing conditions and illustrate the correct application of ClassicBond products only. It may be necessary to modify this detail in whole or part in accordance with specific project conditions, design or requirements.
2. All Pressure Sensitive Plates are to be secured using HP fasteners at a maximum of 300mm centres.
3. Lap Sealant should be applied to 228mm PS Tape at high water flow areas

Key:

1. ClassicBond EPDM Membrane
2. ClassicBond Decking Adhesive (See Notes)
3. Suitable thermal insulation, thickness determined by U-value
4. Vapour Control Layer (VCL)
5. Skylight (by others) installed onto 11mm bead of ClassicBond Water Cut-Off Mastic
6. 152mm PS Cover Strip, maintaining minimum 75mm coverage to field membrane and upstand flashing
7. HP Fastener with 50mm Seam Plate



Title SKYLIGHT KERB DETAIL, DECK MECHANICAL FASTENER	
Product CB	
Rev	Date
Comments	

Drawn CJB	Checked	Approved	Scale 1: 4@A4	Date 31.01.17
Status				
Drawing No: CB/Skylight Kerb 152mm PS PS Tape				Rev: