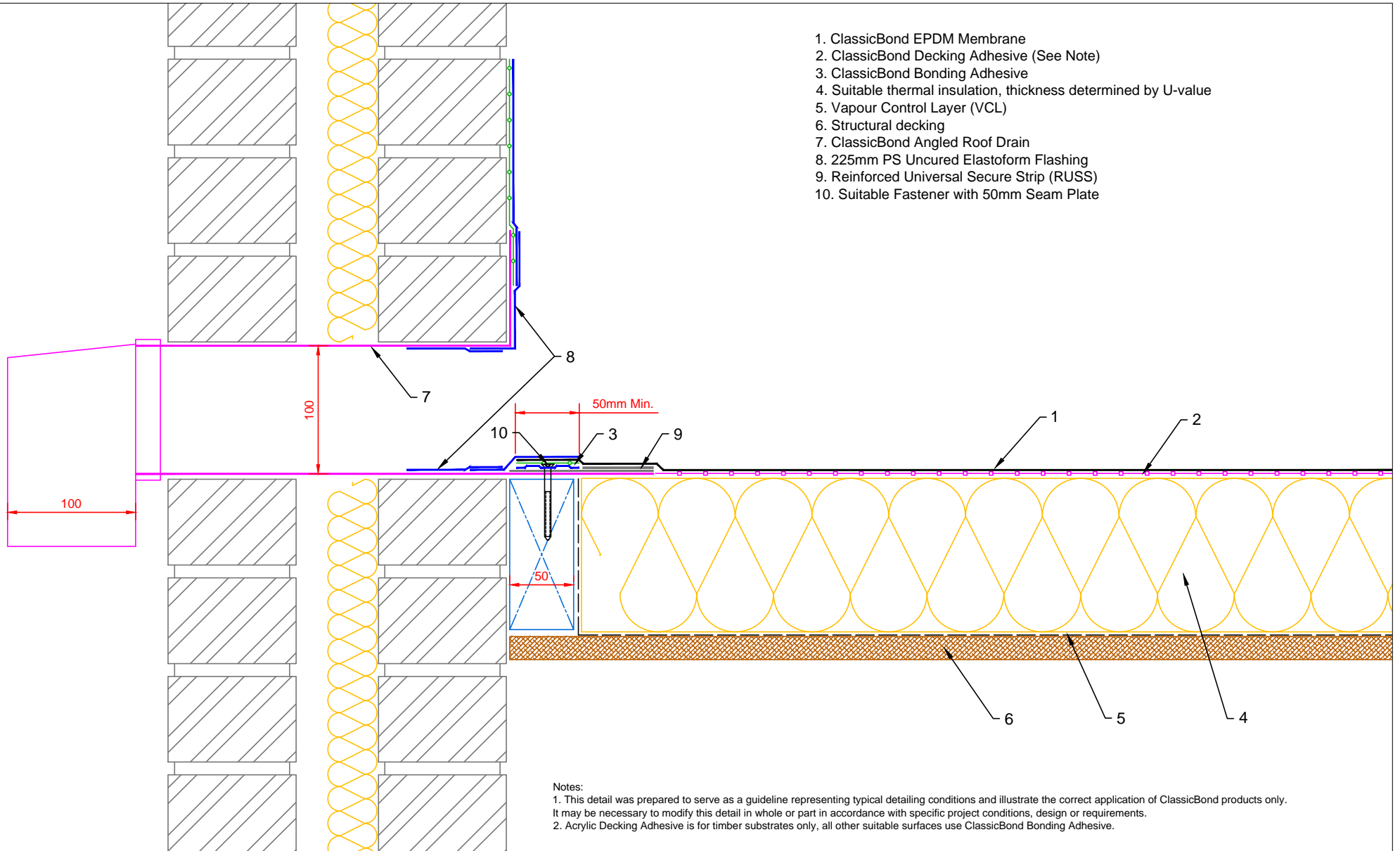


1. ClassicBond EPDM Membrane
2. ClassicBond Decking Adhesive (See Note)
3. ClassicBond Bonding Adhesive
4. Suitable thermal insulation, thickness determined by U-value
5. Vapour Control Layer (VCL)
6. Structural decking
7. ClassicBond Angled Roof Drain
8. 225mm PS Uncured Elastoform Flashing
9. Reinforced Universal Secure Strip (RUSS)
10. Suitable Fastener with 50mm Seam Plate



Notes:
 1. This detail was prepared to serve as a guideline representing typical detailing conditions and illustrate the correct application of ClassicBond products only. It may be necessary to modify this detail in whole or part in accordance with specific project conditions, design or requirements.
 2. Acrylic Decking Adhesive is for timber substrates only, all other suitable surfaces use ClassicBond Bonding Adhesive.



Title ANGLE DRAIN		Drawn MFO		Checked DW	Approved DW	Scale 1: 4@A4	Date 03.02.14
Product CB-D-1		Status PRODUCTION					
A	03.02.14	PRODUCTION Issue				Drawing No: CB/D/1	Rev: A
Rev	Date	Comments					