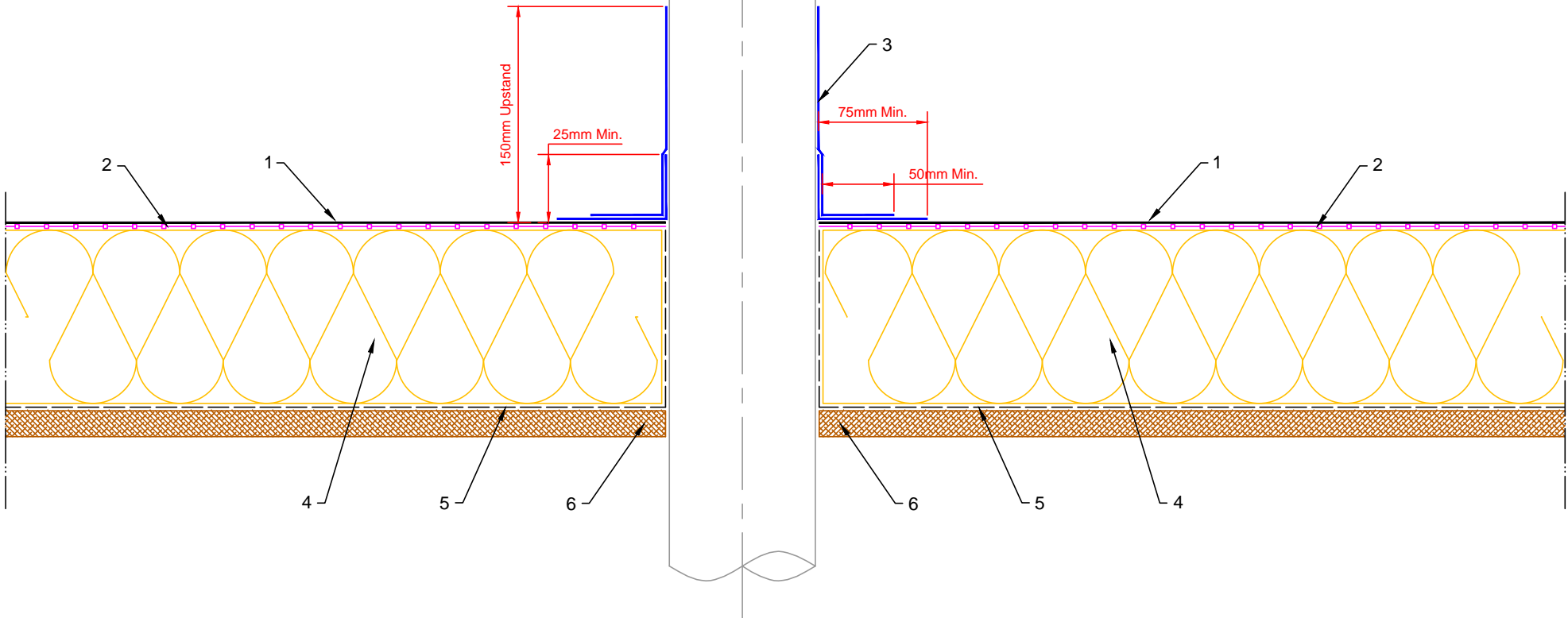



- 1. ClassicBond EPDM Membrane
- 2. ClassicBond Decking Adhesive (See Notes)
- 3. ClassicBond PS Uncured Elastoform Flashing
- 4. Suitable thermal insulation, thickness determined by U-value
- 5. Vapour Control Layer (VCL)
- 6. Structural decking



Notes:
 1. This detail was prepared to serve as a guideline representing typical detailing conditions and illustrate the correct application of ClassicBond products only. It may be necessary to modify this detail in whole or part in accordance with specific project conditions, design or requirements.
 2. Acrylic Decking Adhesive is for timber substrates only, all other suitable surfaces use ClassicBond Bonding Adhesive.
 3. Must be installed using ClassicBond 225mm Uncured Elastoform Flashing Tape

	Title FIELD FABRICATED PIPE SEAL		Drawn MFO	Checked DW	Approved DW	Scale 1: 4@A4	Date 03.02.14
	Product CB-P-1		Status PRODUCTION				
	A	03.02.14	PRODUCTION Issue				
	Rev	Date	Comments				
			Drawing No: CB/P/1			Rev: A	