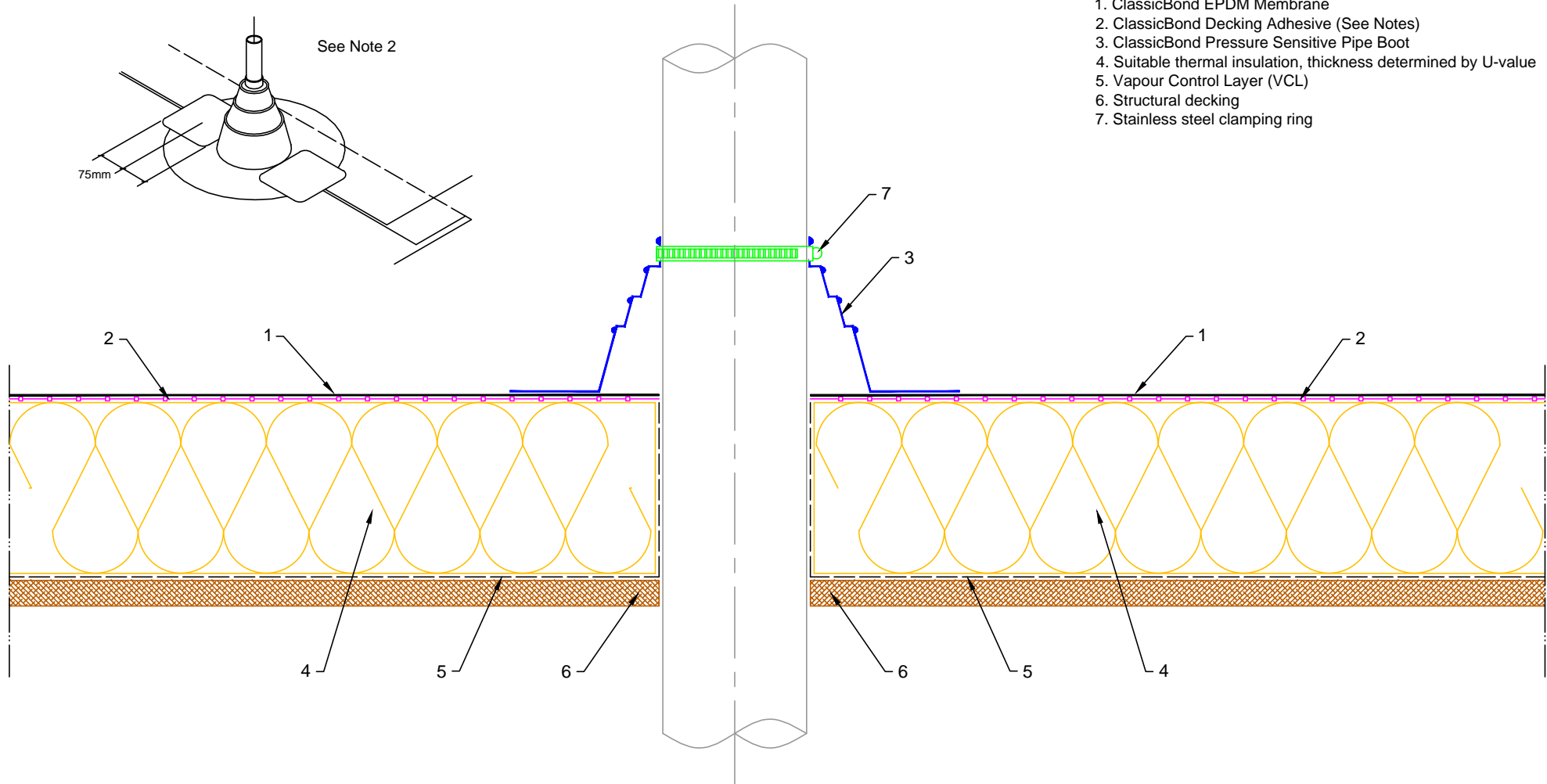


1. ClassicBond EPDM Membrane
2. ClassicBond Decking Adhesive (See Notes)
3. ClassicBond Pressure Sensitive Pipe Boot
4. Suitable thermal insulation, thickness determined by U-value
5. Vapour Control Layer (VCL)
6. Structural decking
7. Stainless steel clamping ring



- Notes:
1. This detail was prepared to serve as a guideline representing typical detailing conditions and illustrate the correct application of ClassicBond products only. It may be necessary to modify this detail in whole or part in accordance with specific project conditions, design or requirements.
 2. Acrylic Decking Adhesive is for timber substrates only, all other suitable surfaces use ClassicBond Bonding Adhesive.
 3. Where Pre-fabricated pipe flashing intersects a field splice cover patches must be installed using ClassicBond 225mm Uncured Elastoform Flashing Tape.
 4. This detail is suitable for pipes 25mm - 150mm in diameter.



| | |
|-----------------------------------|------|
| Title PRE-FABRICATED PIPE SEAL | |
| Product CB-P-2 | |
| Rev | Date |

| | | | |
|-----|--|----------|------------------|
| A | | 03.02.14 | PRODUCTION Issue |
| Rev | | Date | Comments |

| | | | | |
|-----------------------|---------|----------|---------|-----------|
| Drawn | Checked | Approved | Scale | Date |
| MFO | DW | DW | 1: 4@A4 | 03.02.14 |
| Status PRODUCTION | | | | |
| Drawing No: CB/P/2 | | | | Rev: A |