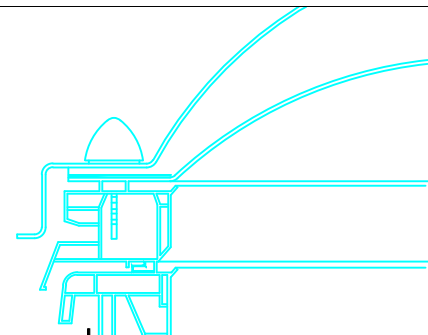
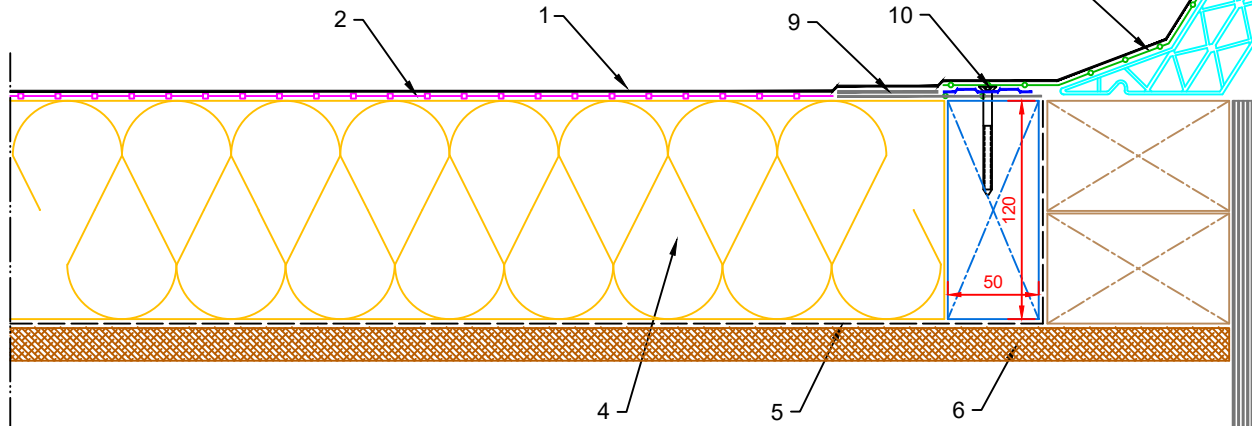


Notes:

1. This detail was prepared to serve as a guideline representing typical detailing conditions and illustrate the correct application of ClassicBond products only. It may be necessary to modify this detail in whole or part in accordance with specific project conditions, design or requirements.
2. Acrylic Decking Adhesive is for timber substrates only, all other suitable surfaces use ClassicBond Bonding Adhesive.
3. Prior to installation of Pressure Sensitive Tape apply ClassicBond EPDM Primer to splice areas.
4. The maximum inside angle change before RUSS is required should be no more than 9.5°.

1. ClassicBond EPDM Membrane
2. ClassicBond Decking Adhesive (See Notes)
3. ClassicBond Bonding Adhesive
4. Suitable thermal insulation, thickness determined by U-value
5. Vapour Control Layer (VCL)
6. Structural decking
7. ClassicBond Pressure Sensitive EPDM Tape
8. Skylight (by others)
9. Reinforced Universal Secure Strip (RUSS)
10. Suitable Fastener with 50mm Seam Plate



Title SKYLIGHT DETAIL (PS TAPE)	
Product CB-SK-1	
A	03.02.14
Rev	Date

PRODUCTION Issue	
Comments	

Drawn MFO	Checked DW	Approved DW	Scale 1: 4@A4	Date 03.02.14
Status PRODUCTION				
Drawing No: CB/SK/1				Rev: B