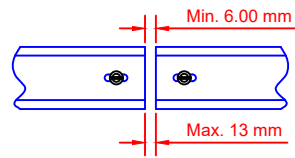


1. ClassicBond EPDM Membrane
2. ClassicBond Decking Adhesive (See Notes)
3. ClassicBond Bonding Adhesive
4. Suitable thermal insulation, thickness determined by U-value
5. Vapour Control Layer (VCL)
6. Structural decking
7. ClassicBond Termination Bar
8. Thermal insulation to detail where applicable
9. ClassicBond Lap Sealant or suitable sealant by others
10. ClassicBond Water Cut Off Mastic
11. Reinforced Universal Secure Strip (RUSS)
12. Suitable Fastener with 50mm Seam Plate



Front View of Termination Bar

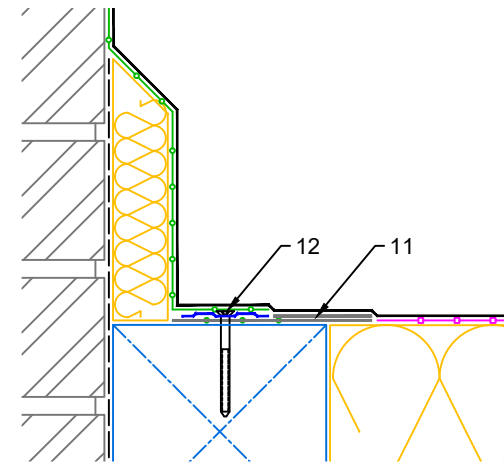


Diagram 2

Notes:

1. This detail was prepared to serve as a guideline representing typical detailing conditions and illustrate the correct application of ClassicBond products only. It may be necessary to modify this detail in whole or part in accordance with specific project conditions, design or requirements.
2. Acrylic Decking Adhesive is for timber substrates only, all other suitable surfaces use ClassicBond Bonding Adhesive.
3. If 75mm field seam turns up through angle change install PS cover patch using 225mm uncured EPDM tape.
4. Alternate fixing detail for RUSS as shown in diagram 2.
5. The maximum inside angle change before RUSS is required should be no more than 9.5°.



Title TERMINATION BAR DETAIL	
Product CB-W-2	
A	03.02.14
Rev	Date

PRODUCTION Issue	
Comments	

Drawn	Checked	Approved	Scale	Date
MFO	DW	DW	1: 4@A4	03.02.14
Status PRODUCTION				
Drawing No: CB/W/2				Rev: B